

41° 21' 30" N.

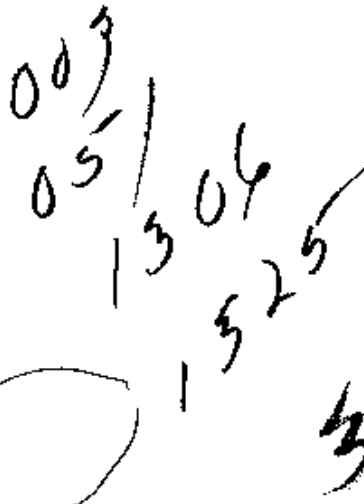
71° 58' W.



A. around c
hard c

B. island

Avl Break
Island



41° 21' 30" N.

71° 58' W.



A. around c
hard c

B.

B.

S-2

dark chop pc

lark tones c

upson ~~pc~~ c

rolling c

water c

winding cft

staley cft

stoney pc

angles c

jumbled objects pc

regular pc

jointed c

projecting c

rounded pc

peaked c

green c

shingled c

medial

confined cft

grey c

rough pc

stone textures c

myster Conn.
city by
the way.

Andreed pc
Elevated pc

2

41° 21' 30" N.

71° 58' W



A. Angles,
land
B. Buildings

A. Around
land

B.

A. going down
floor

B. River pc

S-2

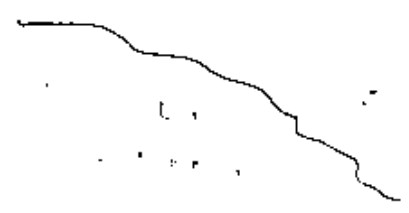
ADL Break

walled city



41° 21' 30" N.

71° 58' W



S-2

dark brown c
orange brown c
rocky soil pe
bare cfr
unsuitable

green c
calm pe
placid cfr
vegetation edged cfr
still cfr

buildings c
urban c
crowded fogged pe
noisy pe
dirty pe
tropical smells cfr
disorganized
land/water interface
red c
tiled c
masonry c
European cfr
humid pe
exotic food smells cfr

A. moving
fluid
B. water c

A. flat
solid
B. land c

A. flat
misty cfr
B.

41° 21' 30" N.

71° 58' W.



A. across (solid)

B. land

A. wavy flat

B. water

A. up flat
manmade

B. Structures

S. 2

grey c

Cement c

Square c

red + pink c

pastel colors pc

vegetation

bridges c

hilly cfr

blue green pc

Erenolated

-

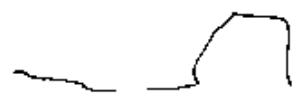


ADL Break
California
City

ADL Break
San Antonio
like a city around
a lake

41° 21' 30" N.

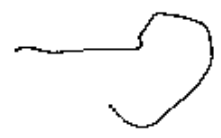
71° 58' W.



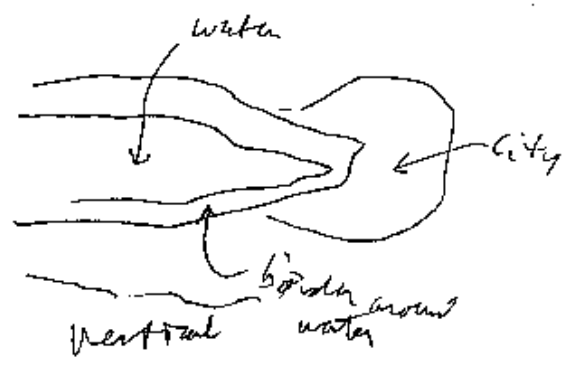
A. miss break

41° 21' 30" N.

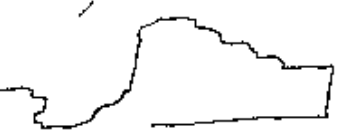
71° 58' W.



A. Confusion break

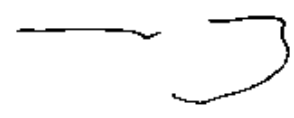


AVL Break
≡ iivich
+ lake



41° 21' 30" N.

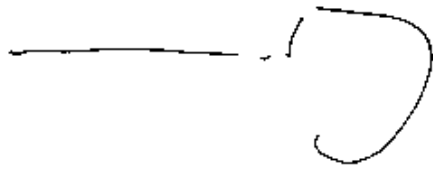
71° 58' W.



A. Flat
land
B. Confusion
breaks

41° 21' 30" N.

71° 58' W



S-2

grey

Corner + angle c

flat tops

peak roofs c

spires c

tapered

lines c

dark pc

large cfr

surrounded cfr

slate grey blue pc

tan c

ti road

curved pc

hollow c

bell sounds c

A. flat across hand

B. City

A. up down c
solid

B. Building c

A. around

fluted

B. Water

A. Break

Cathedral

41° 21' 30" N.

71° 58' W.



S-2

arches

multiple openings c

rectangular pc

paved c

bumpy c

waving c

flats pc

glaze c

stal blue cfr

Monumental c

A. angle c
solid

B. Building pc

embellished ~~of~~ pc

7

for Break
Arch of Trium
Paris
Brandenburg ge
in Berlin

spread out pc

41° 21' 30" N.

71° 58' W



A. look up
haus B

B.

S-2

Smoothly Sloping off

Vertical

overhangy pc

stopped off

havana smells off

farty smells pc

white c

beach c

wave washing c

saline c

shoreline pc

sandy pc

girdas pc

noisy pc

colorful pc

for Break

3d World non western |
feet

multinational/multicultural

for Break
Amusement Park

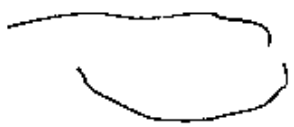
Break

8

Old Ball
Ferris wheel

9. Resun
17 Oct 84
0905

41° 21' 30" N.
71° 58' W.



S-2
Slate grey pc
Calcareous pc
Circular pc
hard-edged c
contaminated pc
mossy cft

A. around c
flint c
B. water c

Confusion Break

41° 21' 30" N.
71° 58' W.



S-2
Stone-grey pc
rough hump pc
jointed pc
blockish pc
Courtyards c
dividers c
walled c

A. Angles c
SOLY c
B. Buildings c

AOL break
palace or castle
surrounded by
moat

Ind
1324

41° 21' 30" N.
71° 58' W.



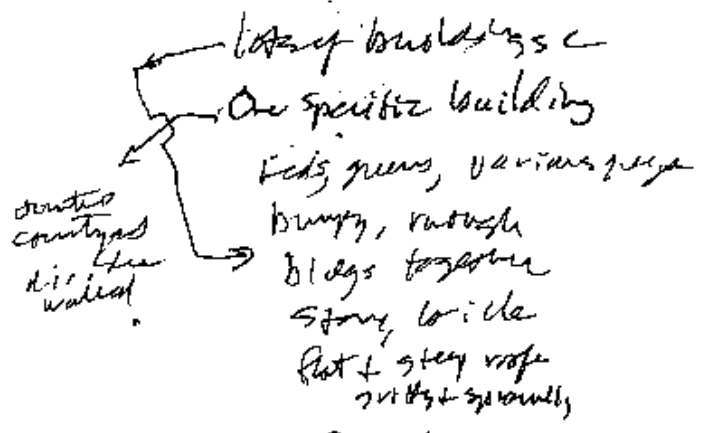
- A. Concrete solid
- B. Buildings

S-2

dirty gray/brown pc
 many c
 set together c
 Adjoining c
 crowded cfb
 sprawling pc
 gritty pc
 hilly cfb
 flat tops pc
 steep slope c
 green c
 red c
 bumpy c
 corrugated cfb
 brickwork c
 serrated cfb

Summary

land water interface filled with concrete



AOL Break
Disney land

end

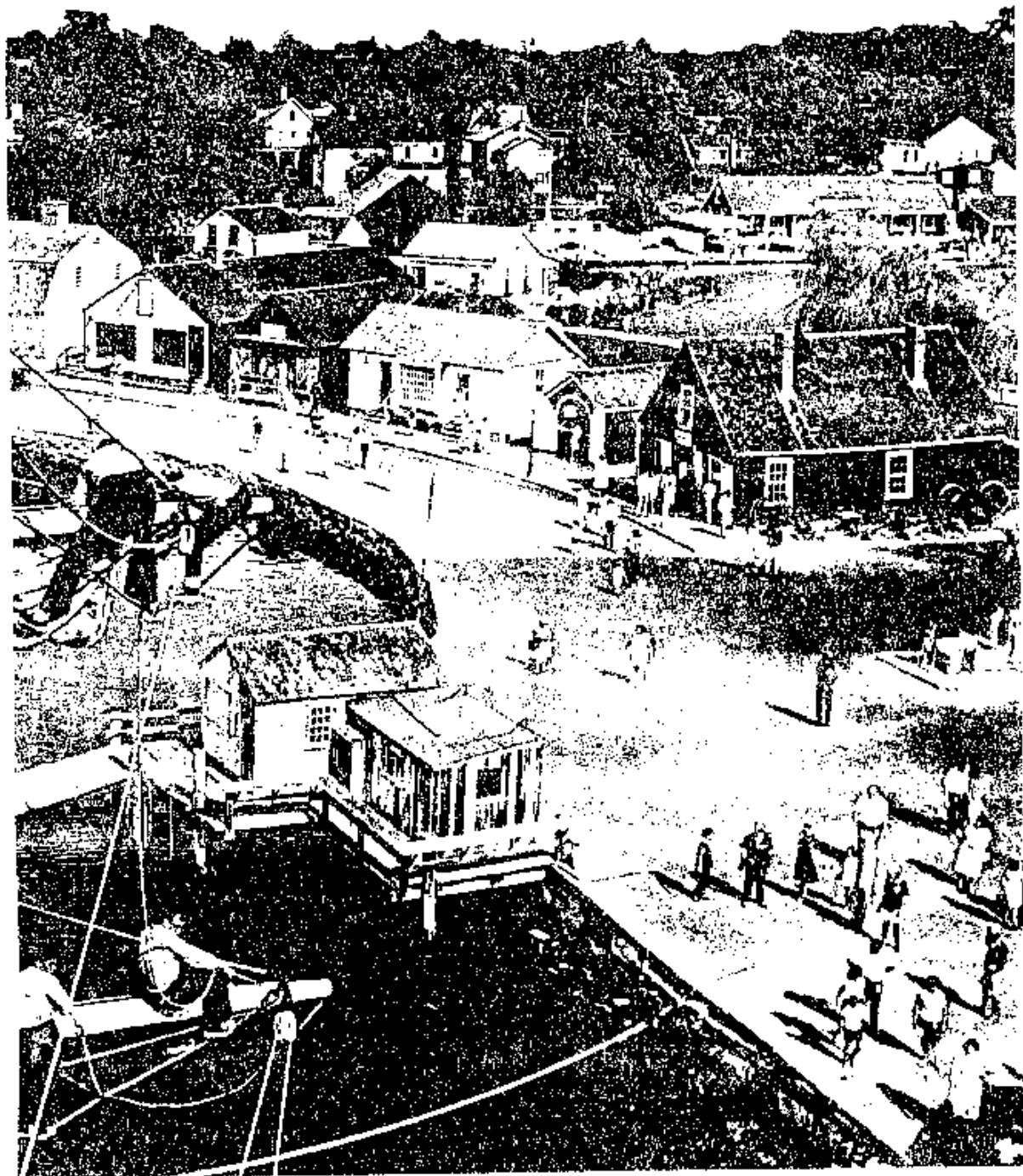
Sail Lives On at Mystic

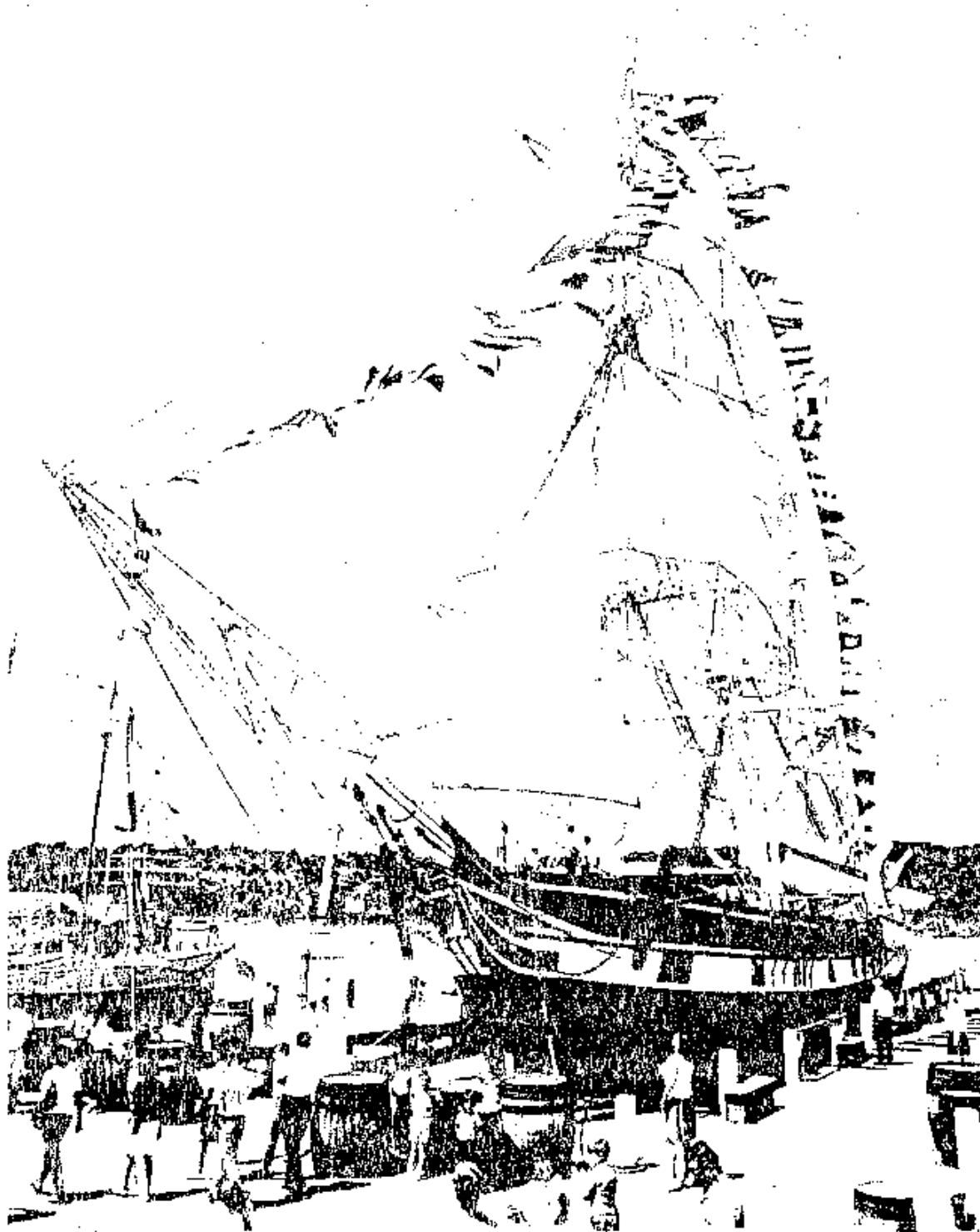
By ALAN VILLIERS

Photographs by WESTON KEMP

Alight in the square-rigger *Joseph Conrad*, youngsters relive the rugged days of old.

BY ALAN VILLIERS AND WESTON KEMP





Blindfold of Alst... (unreadable) ... (unreadable)

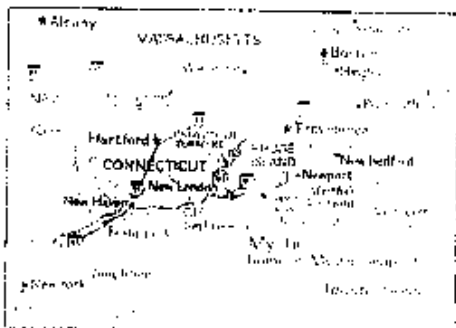
(The following text is extremely faint and largely illegible due to the high contrast and grain of the image. It appears to be a block of text, possibly a caption or a short article, located below the main photograph.)

Mystic Seaport

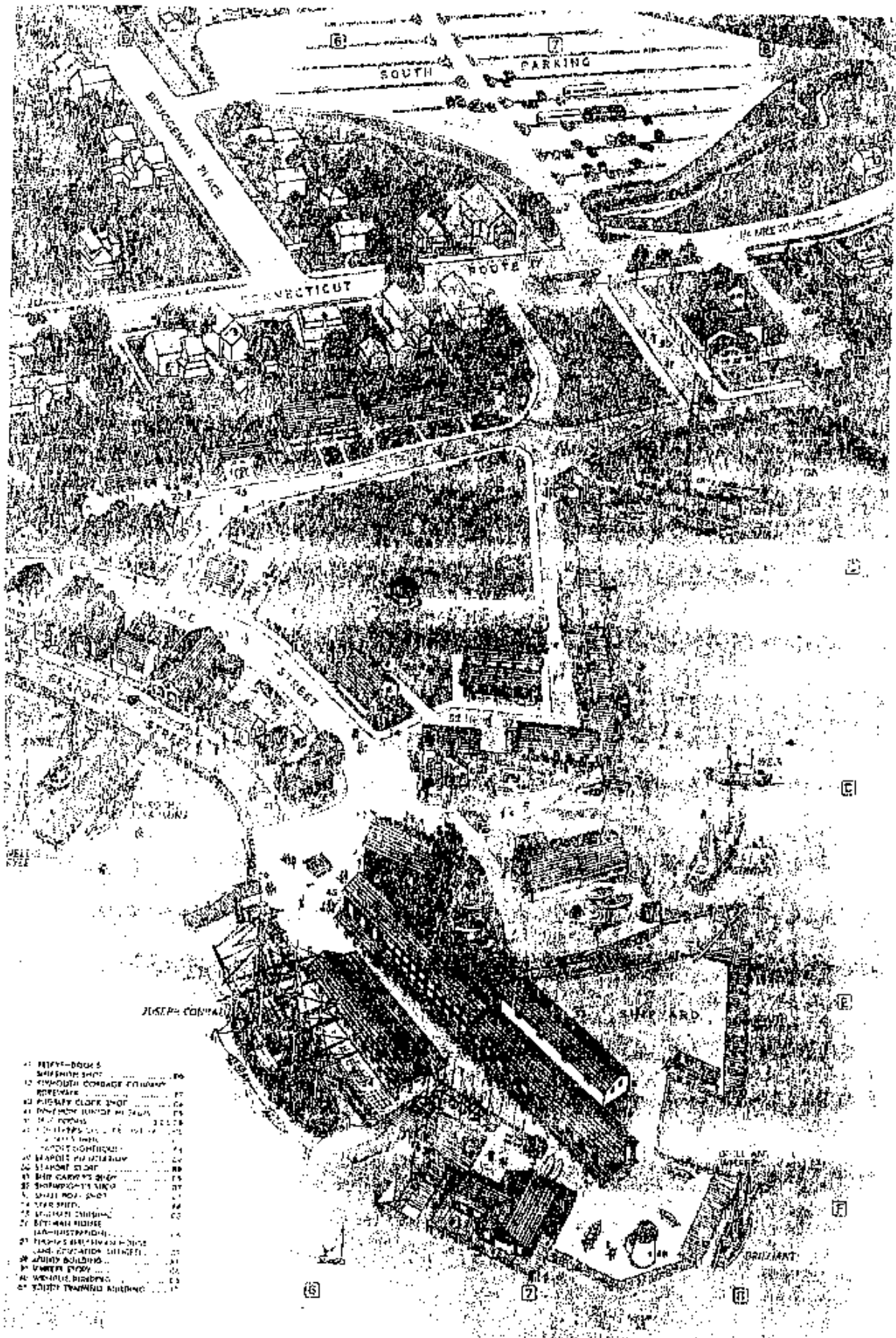
FOR CENTURIES the men of Mystic built ships—schooners, whalers, clippers, and sent them to earth's far corners. Then steam overtook the windships, and one by one they died. Alarmed, three citizens formed the Marine Historical Association in 1929, and out of it grew the living maritime museum called Mystic Seaport. The site came gifts of small craft and schooners, masts and barrels. Today more than 400,000 persons a year come to rediscover a glorious era.



MYSTIC RIVER



- 1. MUSEUM OF MARITIME HISTORY
- 2. MARINE HISTORICAL ASSOCIATION
- 3. MARINE HISTORICAL ASSOCIATION OFFICE
- 4. MARINE HISTORICAL ASSOCIATION STORE
- 5. MARINE HISTORICAL ASSOCIATION RESTAURANT
- 6. MARINE HISTORICAL ASSOCIATION GARDENS
- 7. MARINE HISTORICAL ASSOCIATION PLAYGROUND
- 8. MARINE HISTORICAL ASSOCIATION THEATRE
- 9. MARINE HISTORICAL ASSOCIATION LIBRARY
- 10. MARINE HISTORICAL ASSOCIATION MUSEUM
- 11. MARINE HISTORICAL ASSOCIATION OFFICE
- 12. MARINE HISTORICAL ASSOCIATION STORE
- 13. MARINE HISTORICAL ASSOCIATION RESTAURANT
- 14. MARINE HISTORICAL ASSOCIATION GARDENS
- 15. MARINE HISTORICAL ASSOCIATION PLAYGROUND
- 16. MARINE HISTORICAL ASSOCIATION THEATRE
- 17. MARINE HISTORICAL ASSOCIATION LIBRARY
- 18. MARINE HISTORICAL ASSOCIATION MUSEUM
- 19. MARINE HISTORICAL ASSOCIATION OFFICE
- 20. MARINE HISTORICAL ASSOCIATION STORE
- 21. MARINE HISTORICAL ASSOCIATION RESTAURANT
- 22. MARINE HISTORICAL ASSOCIATION GARDENS
- 23. MARINE HISTORICAL ASSOCIATION PLAYGROUND
- 24. MARINE HISTORICAL ASSOCIATION THEATRE
- 25. MARINE HISTORICAL ASSOCIATION LIBRARY
- 26. MARINE HISTORICAL ASSOCIATION MUSEUM
- 27. MARINE HISTORICAL ASSOCIATION OFFICE
- 28. MARINE HISTORICAL ASSOCIATION STORE
- 29. MARINE HISTORICAL ASSOCIATION RESTAURANT
- 30. MARINE HISTORICAL ASSOCIATION GARDENS
- 31. MARINE HISTORICAL ASSOCIATION PLAYGROUND
- 32. MARINE HISTORICAL ASSOCIATION THEATRE
- 33. MARINE HISTORICAL ASSOCIATION LIBRARY
- 34. MARINE HISTORICAL ASSOCIATION MUSEUM
- 35. MARINE HISTORICAL ASSOCIATION OFFICE
- 36. MARINE HISTORICAL ASSOCIATION STORE
- 37. MARINE HISTORICAL ASSOCIATION RESTAURANT
- 38. MARINE HISTORICAL ASSOCIATION GARDENS
- 39. MARINE HISTORICAL ASSOCIATION PLAYGROUND
- 40. MARINE HISTORICAL ASSOCIATION THEATRE
- 41. MARINE HISTORICAL ASSOCIATION LIBRARY
- 42. MARINE HISTORICAL ASSOCIATION MUSEUM
- 43. MARINE HISTORICAL ASSOCIATION OFFICE
- 44. MARINE HISTORICAL ASSOCIATION STORE
- 45. MARINE HISTORICAL ASSOCIATION RESTAURANT
- 46. MARINE HISTORICAL ASSOCIATION GARDENS
- 47. MARINE HISTORICAL ASSOCIATION PLAYGROUND
- 48. MARINE HISTORICAL ASSOCIATION THEATRE
- 49. MARINE HISTORICAL ASSOCIATION LIBRARY
- 50. MARINE HISTORICAL ASSOCIATION MUSEUM



- 01 BERRY-DUCKS
- 02 BERRY-DUCKS
- 03 BERRY-DUCKS
- 04 BERRY-DUCKS
- 05 BERRY-DUCKS
- 06 BERRY-DUCKS
- 07 BERRY-DUCKS
- 08 BERRY-DUCKS
- 09 BERRY-DUCKS
- 10 BERRY-DUCKS
- 11 BERRY-DUCKS
- 12 BERRY-DUCKS
- 13 BERRY-DUCKS
- 14 BERRY-DUCKS
- 15 BERRY-DUCKS
- 16 BERRY-DUCKS
- 17 BERRY-DUCKS
- 18 BERRY-DUCKS
- 19 BERRY-DUCKS
- 20 BERRY-DUCKS
- 21 BERRY-DUCKS
- 22 BERRY-DUCKS
- 23 BERRY-DUCKS
- 24 BERRY-DUCKS
- 25 BERRY-DUCKS