

~~Paul~~
9 Oct
15:28

53° 00' 50" N.
9° 36' W.

003
05/
1528
16 15
↓

A. miss break

53° 50" N.
9° 36' W.

A. across
windy



Confusion Breaks

53° 50" N.
9° 36' W.

A. across
flat
hard

B. land c

A. windy
wiggly
fluid

B. water c

- S-2
- white c
- cream color c
- striated c
- rough
- sandy c
- rounded
- vegetated c
- lobes cfr
- wild sounds c
- pink cfr
- red cfr
- black pe
- podded cov

Stone houses
Juel ans

brown c
cool c
Pheromone cfr
flower smells pc
insect sounds cfr
sighing sound
creased pc

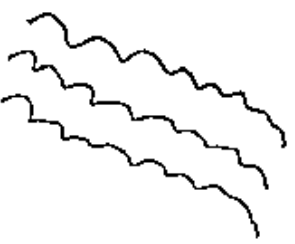
A01 Break
red to white
sandstone
formations

A02 Break
Green liq
plate on old
car

53° 50" N.
9° 36' W.



A. sunset
descending
solid
B. Regentash
confusion break



S-2
lumpy pc
bumpy c
nodules c
mineralized cfr
sparkly cfr
inconsistent c
networks c
cumbly by c
weathered c
abandoned c

A1 break
bleak, lonesome
abandoned

A02 Break
dry break
great town

AOZ Break
desert, was as
windy empty

53° 00' 50" N.

9° 36' W.

miss break

53° 50" N.

9° 36' W.

A. across
waves
B. water

S-2

flat c

gray c

ripples c

up

solid

light gray c

bird sounds pr

fuzzy smell of

grainy c

gritty c

bumpy c

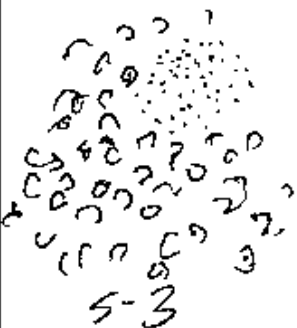
extruded of

jumbled c

glistening of

smooth c

lumpy c

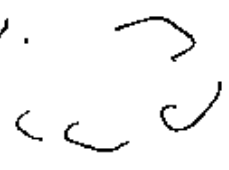


S-3

AOZ Break
Oyster/Muscles
AOZ Break
Limestone cave

53° 50' N.

9° 36' W.



A. rounded
Solid

B. -

S-2

- Smelly gr
- damp pe
- Sandy pe
- diff. Hard pe
- cold c
- hard c
- Salty c
- ~~one crushed~~
- ~~another c~~
- loose c
- slippery pe
- bird sounds
- aches gr
- surf sounds c
- hazy c

AVL break
 bird eggs
 Cannon balls

53° 00' 50" N.

9° 36' W.



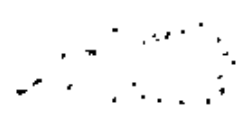
A. Scalloped
Solid

B. -



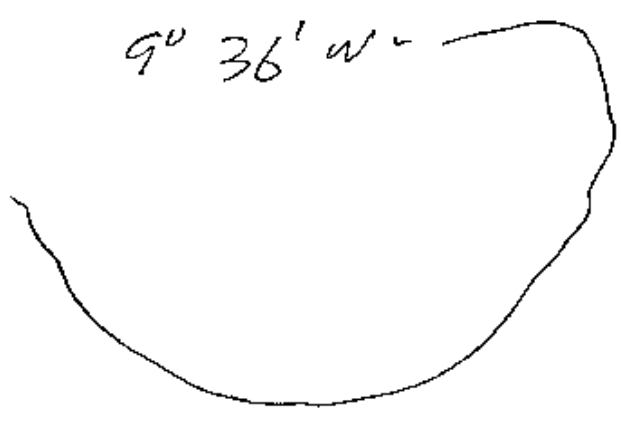
S-2
green c
blue c
red cft
dark brown c
dense pe
mottled

Stone c



53° 00' 50" N.

9° 36' W.



A. around
hard

B. -

S-2

open c
broken c
piled c
fractured c
empty c
washed pe
rotting pe
leaves pe
crustly
sandy pe
mottled c

lines c
 Cornus + edge c
 tumbledown c
 Fragmented c
 blasted

A06 Break

ruined structure for
 by the sea

53° 00' 50" N.

9° 36' W.



A. Cornus, angle
 50° 0'

B. Structure c

S-2

grey

flatsurfed c

round c

deep cfr

fall cfr

big pe

average pe

'blocky c

loose pe

piled c

rounded

manmade c

solid work c

staked c

willow c

from

piles c

A02 Break

1 wall in ruins
 in sandwood

A02 Poreak

ruined lighthouse



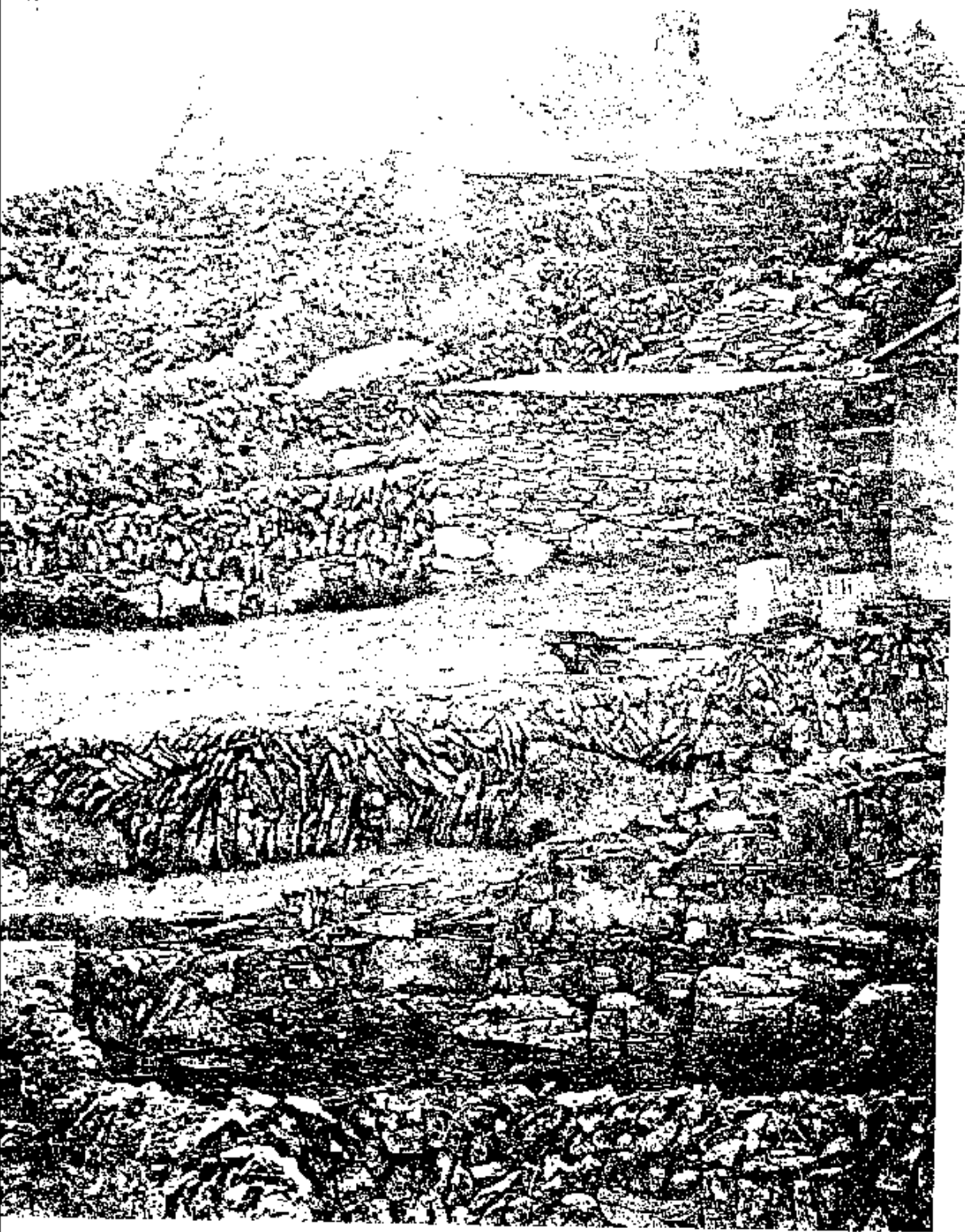
S-3 sketch

7
OOL Break
Radar Jones
Aleutians

end



Field-stilling fences of mountain stone, built of rock, clear of the road
at the top of the mountain, near the top of the mountain.



hurricane winds. This is to a field means climbing the tower or taking part of it.
Down the hill and far below was a large area of water, and the
the date of the construction of the dam, and the date of the construction of the dam.